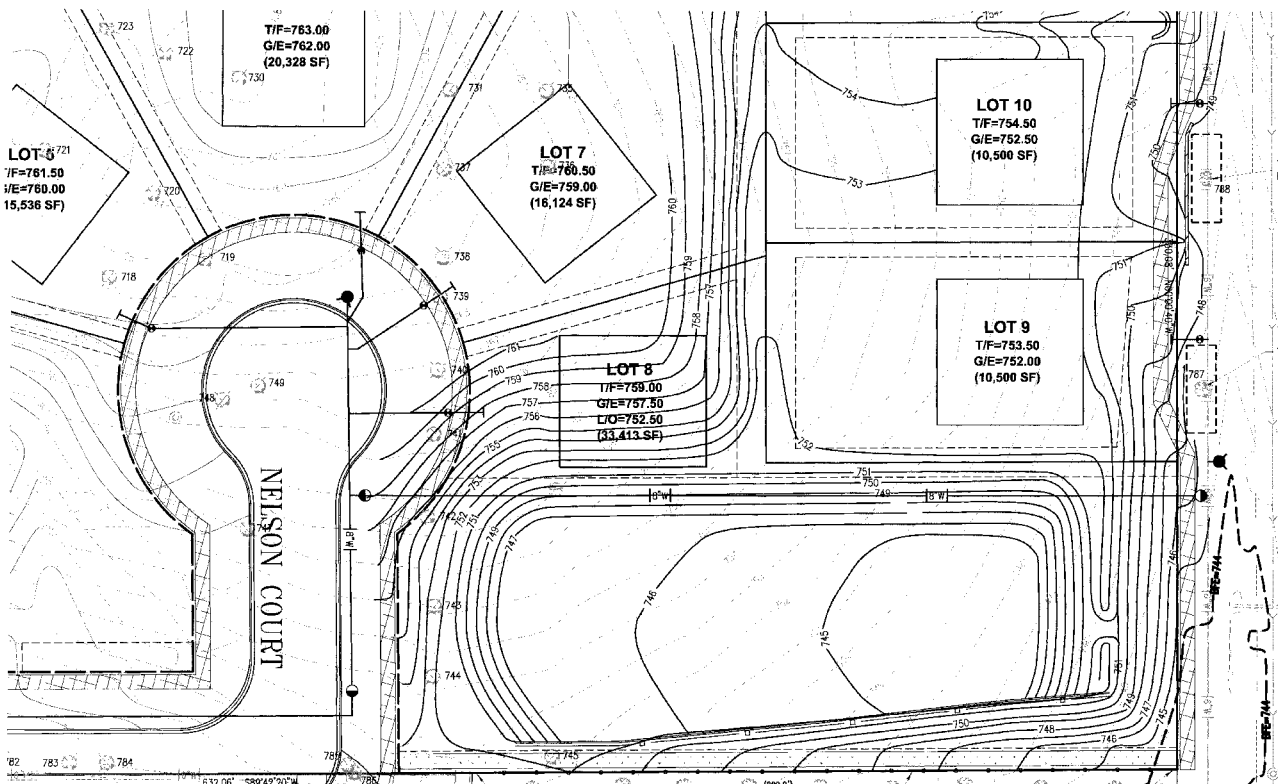


TREE PRESERVATION EXHIBIT FOR AREA SOUTH OF DETENTION POND AND ALONG CARPENTER STREET



CARPENTER STREET

TO BE PRESERVED



TREES TABLE

TAG NUMBER	SIZE	SPECIES	CONDITION
700	12"	FRAXINUS PENNSYLVANICA	GOOD
701	12"	FRAXINUS PENNSYLVANICA	GOOD
702	12"	FRAXINUS PENNSYLVANICA	GOOD
703	12"	FRAXINUS PENNSYLVANICA	GOOD
704	12"	FRAXINUS PENNSYLVANICA	GOOD
705	12"	FRAXINUS PENNSYLVANICA	GOOD
706	12"	FRAXINUS PENNSYLVANICA	GOOD
707	12"	FRAXINUS PENNSYLVANICA	GOOD
708	12"	FRAXINUS PENNSYLVANICA	GOOD
709	12"	FRAXINUS PENNSYLVANICA	GOOD
710	12"	FRAXINUS PENNSYLVANICA	GOOD
711	12"	FRAXINUS PENNSYLVANICA	GOOD
712	12"	FRAXINUS PENNSYLVANICA	GOOD
713	12"	FRAXINUS PENNSYLVANICA	GOOD
714	12"	FRAXINUS PENNSYLVANICA	GOOD
715	12"	FRAXINUS PENNSYLVANICA	GOOD
716	12"	FRAXINUS PENNSYLVANICA	GOOD
717	12"	FRAXINUS PENNSYLVANICA	GOOD
718	12"	FRAXINUS PENNSYLVANICA	GOOD
719	12"	FRAXINUS PENNSYLVANICA	GOOD
720	12"	FRAXINUS PENNSYLVANICA	GOOD
721	12"	FRAXINUS PENNSYLVANICA	GOOD
722	12"	FRAXINUS PENNSYLVANICA	GOOD
723	12"	FRAXINUS PENNSYLVANICA	GOOD
724	12"	FRAXINUS PENNSYLVANICA	GOOD
725	12"	FRAXINUS PENNSYLVANICA	GOOD
726	12"	FRAXINUS PENNSYLVANICA	GOOD
727	12"	FRAXINUS PENNSYLVANICA	GOOD
728	12"	FRAXINUS PENNSYLVANICA	GOOD
729	12"	FRAXINUS PENNSYLVANICA	GOOD
730	12"	FRAXINUS PENNSYLVANICA	GOOD
731	12"	FRAXINUS PENNSYLVANICA	GOOD
732	12"	FRAXINUS PENNSYLVANICA	GOOD
733	12"	FRAXINUS PENNSYLVANICA	GOOD
734	12"	FRAXINUS PENNSYLVANICA	GOOD
735	12"	FRAXINUS PENNSYLVANICA	GOOD
736	12"	FRAXINUS PENNSYLVANICA	GOOD
737	12"	FRAXINUS PENNSYLVANICA	GOOD
738	12"	FRAXINUS PENNSYLVANICA	GOOD
739	12"	FRAXINUS PENNSYLVANICA	GOOD
740	12"	FRAXINUS PENNSYLVANICA	GOOD
741	12"	FRAXINUS PENNSYLVANICA	GOOD
742	12"	FRAXINUS PENNSYLVANICA	GOOD
743	12"	FRAXINUS PENNSYLVANICA	GOOD
744	12"	FRAXINUS PENNSYLVANICA	GOOD
745	12"	FRAXINUS PENNSYLVANICA	GOOD
746	12"	FRAXINUS PENNSYLVANICA	GOOD
747	12"	FRAXINUS PENNSYLVANICA	GOOD
748	12"	FRAXINUS PENNSYLVANICA	GOOD
749	12"	FRAXINUS PENNSYLVANICA	GOOD
750	12"	FRAXINUS PENNSYLVANICA	GOOD
751	12"	FRAXINUS PENNSYLVANICA	GOOD
752	12"	FRAXINUS PENNSYLVANICA	GOOD
753	12"	FRAXINUS PENNSYLVANICA	GOOD
754	12"	FRAXINUS PENNSYLVANICA	GOOD
755	12"	FRAXINUS PENNSYLVANICA	GOOD
756	12"	FRAXINUS PENNSYLVANICA	GOOD
757	12"	FRAXINUS PENNSYLVANICA	GOOD
758	12"	FRAXINUS PENNSYLVANICA	GOOD
759	12"	FRAXINUS PENNSYLVANICA	GOOD
760	12"	FRAXINUS PENNSYLVANICA	GOOD
761	12"	FRAXINUS PENNSYLVANICA	GOOD
762	12"	FRAXINUS PENNSYLVANICA	GOOD
763	12"	FRAXINUS PENNSYLVANICA	GOOD
764	12"	FRAXINUS PENNSYLVANICA	GOOD
765	12"	FRAXINUS PENNSYLVANICA	GOOD
766	12"	FRAXINUS PENNSYLVANICA	GOOD
767	12"	FRAXINUS PENNSYLVANICA	GOOD
768	12"	FRAXINUS PENNSYLVANICA	GOOD
769	12"	FRAXINUS PENNSYLVANICA	GOOD
770	12"	FRAXINUS PENNSYLVANICA	GOOD
771	12"	FRAXINUS PENNSYLVANICA	GOOD
772	12"	FRAXINUS PENNSYLVANICA	GOOD
773	12"	FRAXINUS PENNSYLVANICA	GOOD
774	12"	FRAXINUS PENNSYLVANICA	GOOD
775	12"	FRAXINUS PENNSYLVANICA	GOOD
776	12"	FRAXINUS PENNSYLVANICA	GOOD
777	12"	FRAXINUS PENNSYLVANICA	GOOD
778	12"	FRAXINUS PENNSYLVANICA	GOOD
779	12"	FRAXINUS PENNSYLVANICA	GOOD
780	12"	FRAXINUS PENNSYLVANICA	GOOD
781	12"	FRAXINUS PENNSYLVANICA	GOOD
782	12"	FRAXINUS PENNSYLVANICA	GOOD
783	12"	FRAXINUS PENNSYLVANICA	GOOD
784	12"	FRAXINUS PENNSYLVANICA	GOOD
785	12"	FRAXINUS PENNSYLVANICA	GOOD
786	12"	FRAXINUS PENNSYLVANICA	GOOD
787	12"	FRAXINUS PENNSYLVANICA	GOOD
788	12"	FRAXINUS PENNSYLVANICA	GOOD

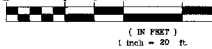
AVENUE

PROPOSED SILT FENCE TO BE LOCATED ON PROPERTY LINE ALONG THE SOUTH SIDE OF POND. ALSO PROVIDE SEMI-PERMANENT CHAIN LINK FENCE ON SOUTH PROPERTY LINE TO PROTECT TREES SOUTH OF PROPERTY. TEMPORARY FENCE MUST BE COORDINATED WITH THE VILLAGE FORESTER FOR POSSIBLE INSPECTION.

FENCE TO BE INSTALLED PRIOR TO ANY SITEWORK BEGINNING.

TREE ROOT PRUNING TO BE CONDUCTED AT THE DIRECTION OF VILLAGE ARBORIST AND DEVELOPER'S CONSULTANT, IN COORDINATION.

GRAPHIC SCALE



© Copyright, 2011 C.M. Lavoie & Associates, Inc. These plans are protected under the copyright laws of the United States and foreign countries, and are to be used only for the construction and/or repair of the Site Improvements as defined in the contract between the Engineer and the Owner. Any use of these plans, including details and specifications, to construct and/or repair additional items not described in these plans, constitutes a violation of the Engineer's copyright of these plans and is prohibited.

REVISOR PER VILLAGE REVIEW

NOTES:

- THE LOCATION OF EXISTING UNDERGROUND UTILITIES, SUCH AS WATER MAINS, SEWERS, GAS LINES, ELECTRIC LINES, TELEPHONE LINES, ETC., AS SHOWN ON THE PLANS HAVE BEEN DETERMINED FROM THE BEST AVAILABLE INFORMATION AND IS GIVEN FOR THE CONVENIENCE OF THE CONTRACTOR. HOWEVER, THE ENGINEER AND OWNER DO NOT ASSUME RESPONSIBILITY FOR THE ACCURACY OF THE LOCATIONS SHOWN. IT SHALL BE THE CONTRACTOR'S RESPONSIBILITY TO CONTACT ALL UTILITY COMPANIES AND THEIR FACILITIES SHALL BE LOCATED PRIOR TO ANY WORK.
- EXISTING GRADES AND IMPROVEMENTS ARE SHOWN FROM THE BEST INFORMATION AVAILABLE AND MUST BE VERIFIED IN THE FIELD BY THE CONTRACTOR PRIOR TO THE START OF CONSTRUCTION. ANY DISCREPANCY WITH THE PLAN SHALL BE IMMEDIATELY REPORTED TO THE ENGINEER.
- PRIOR TO THE START OF CONSTRUCTION, THE CONTRACTOR SHALL EXPOSE ANY UTILITIES OR OTHER OBSTRUCTIONS TO BE COVERED BY THE PROPOSED SEWERS AND SHALL NOTIFY THE ENGINEER IMMEDIATELY IF THESE ARE ANY CONFLICTS WITH THE PROPOSED SEWER GRADE.

NELSON MEADOW - PHASE I

WEST SIDE OF CARPENTER STREET
DOWNERS GROVE, ILLINOIS

TREE PRESERVATION PLAN

DESIGNED BY: ONW
SCALE: 1"=20'
JOB NUMBER: 04-200

CHECKED BY: THW
DATE: 08-11-10
SHEET: 11 OF 11

NO.	DATE	DESCRIPTION
1	07-11-10	PREP. RELEASE OF NEW
2		
3		
4		
5		
6		
7		
8		

C.M. Lavoie & Associates, Inc.
Consulting Civil Engineer
Lead Planning & Surveying
1000 State Route 120
Downers Grove, IL 60515
Phone: 630-584-0900
Fax: 630-584-0904
www.cmla.com