

# Jefferson Avenue Treescape Buffer

Village of Downers Grove  
Plan Commission Hearing  
File PC-25-05  
October 3, 2005

Mike and Sharon Hackbarth  
1121 Jefferson Avenue



# Trees

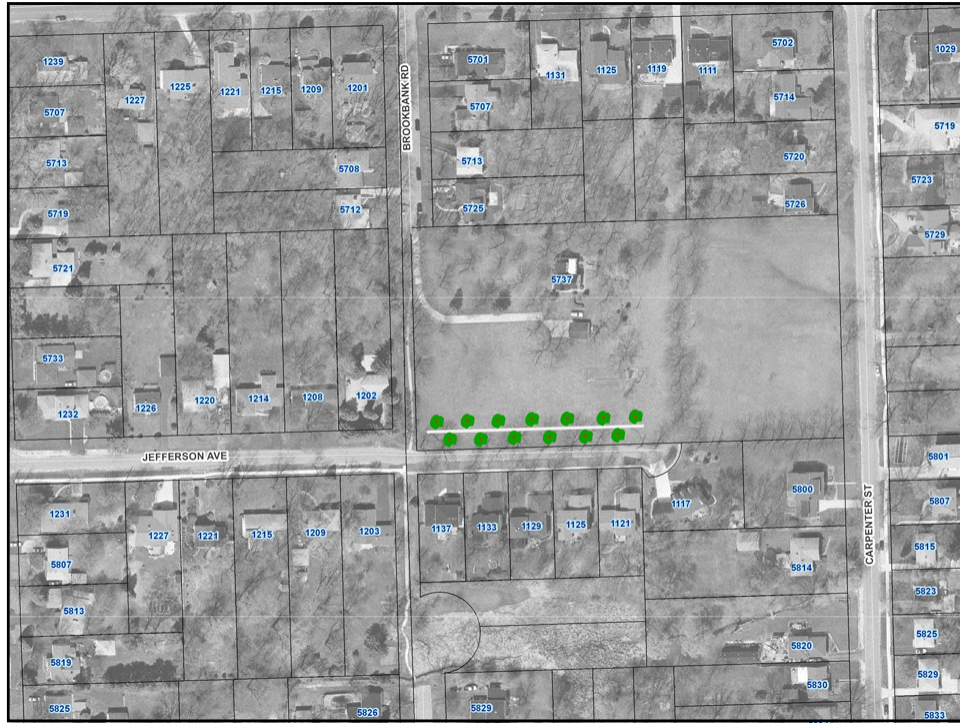
- Large mature trees are an essential characteristic of the neighborhood
- 40+ large mature trees removed from the interior of the subject property on April 12<sup>th</sup> and 13<sup>th</sup> – private property
- 10 large mature trees removed from the Jefferson Avenue edge of the property – from land proposed to be dedicated to the Village of Downers Grove – pre-empted any possibility of public hearing input
- 18-25 large mature trees proposed to be removed from public Village property in the Brookbank Road R.O.W. – we respectfully disagree that these trees are not worth saving
- 13 large mature trees threatened on private property south of the subject property by the proposed location of the detention pond
- Only 36 small 2-inch trees are currently required as replacements
- More and larger trees are required to restore a semblance of the neighborhood character





## Jefferson Avenue Treescape Buffer

- Replace the lost parkway treescape with a double row of trees:
  - Total of 13 trees
  - 7 trees in a row north of the new sidewalk
  - 6 trees in a row south of the new sidewalk
  - Staggered placement
  - Give the appearance of one tree every 20 feet,
- Optimal placement of utilities to accommodate maximum tree placement (plan the tree placement first)
- Side-loading driveways (off Brookbank and the new cul-de-sac respectively) to accommodate maximum tree placement
- Require a detailed tree plan acceptable to the Village and the neighbors prior to approval



**Thank you!**