

# Detention Pond Impact on Remaining Walnut Trees

Village of Downers Grove  
Plan Commission Hearing  
File PC-25-05  
October 3, 2005

William McCune  
1436 Thornwood Drive

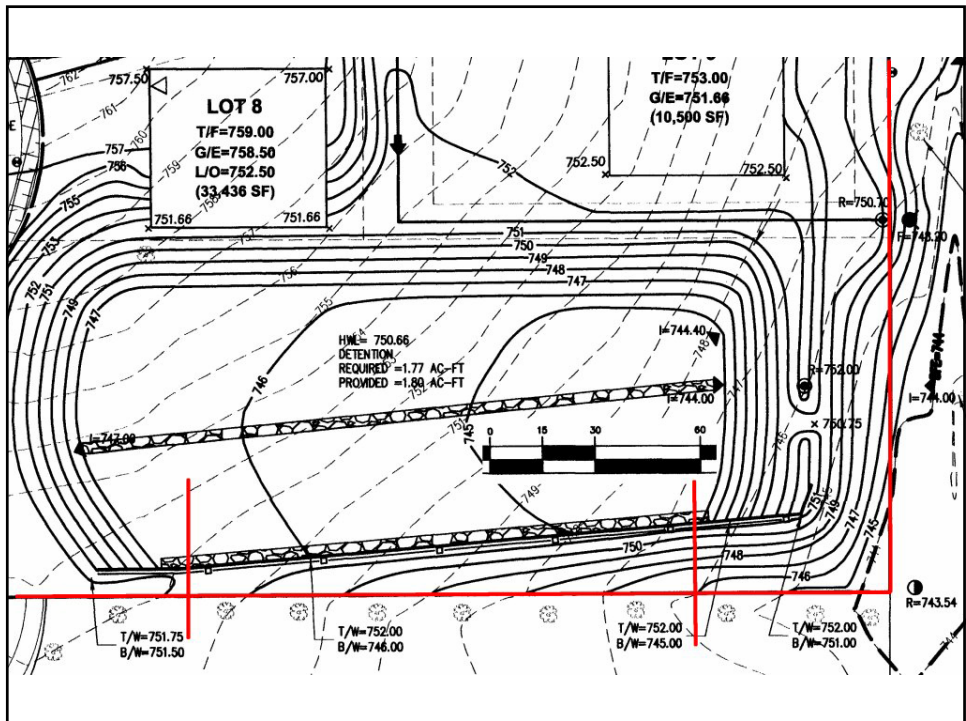
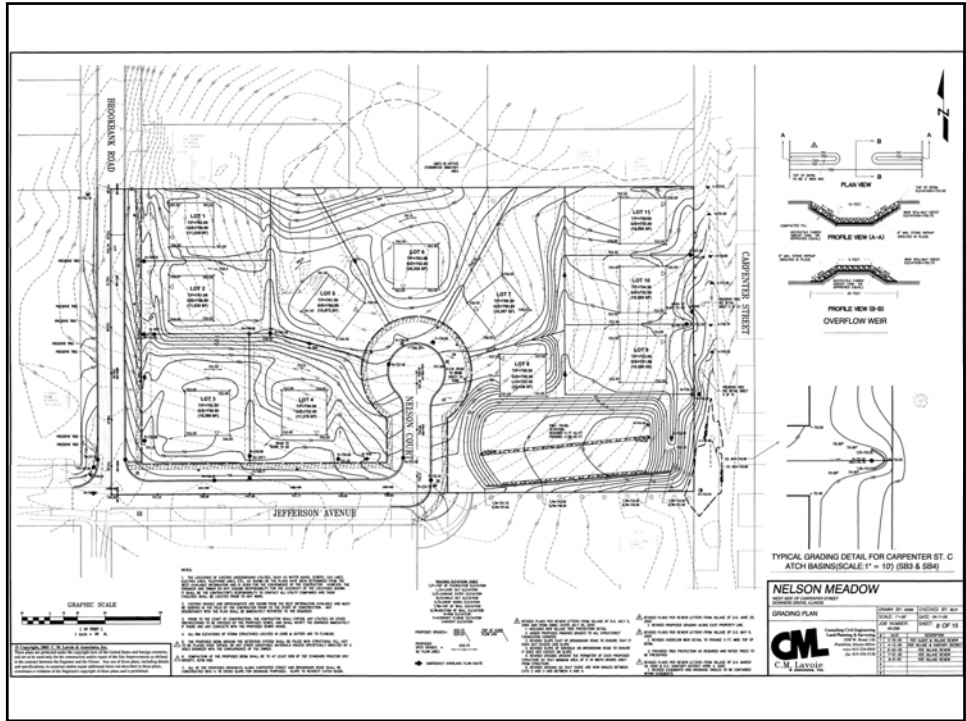


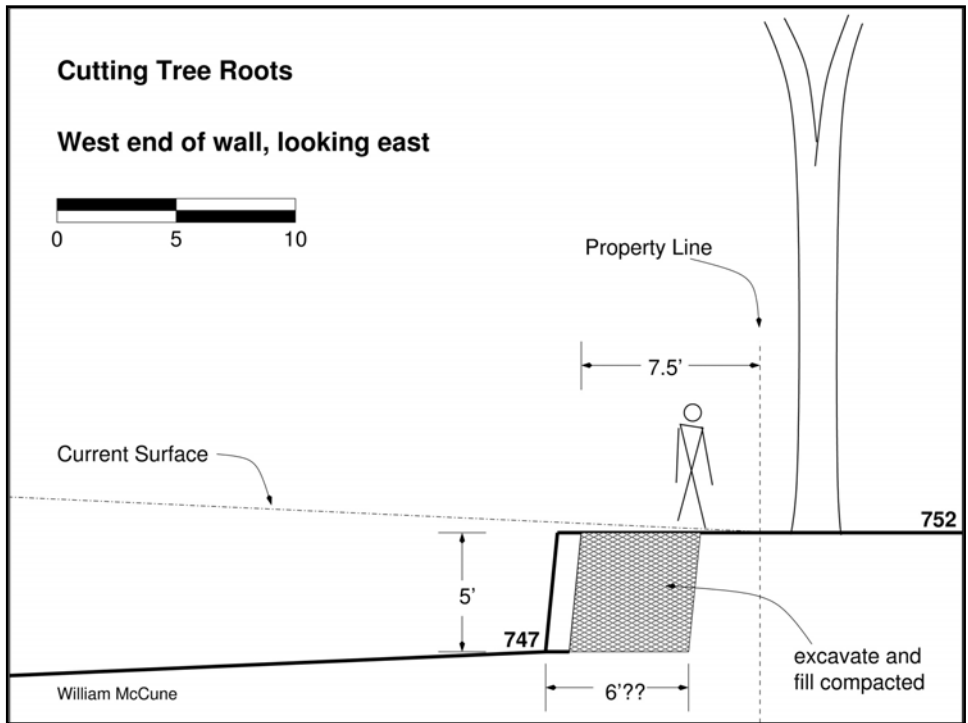
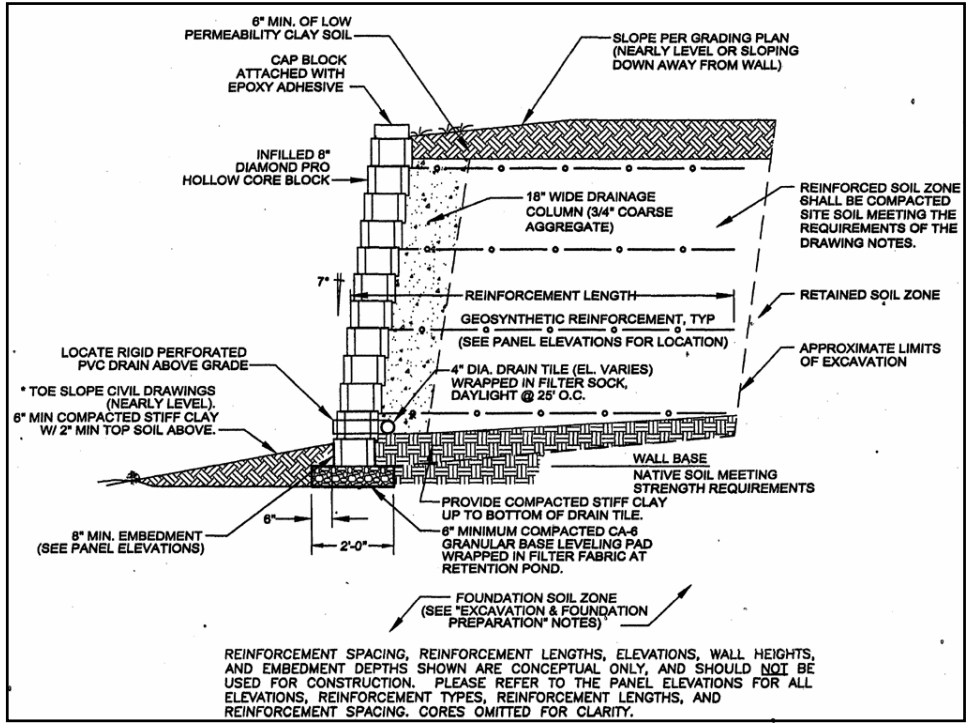


Looking WEST from Carpenter Street



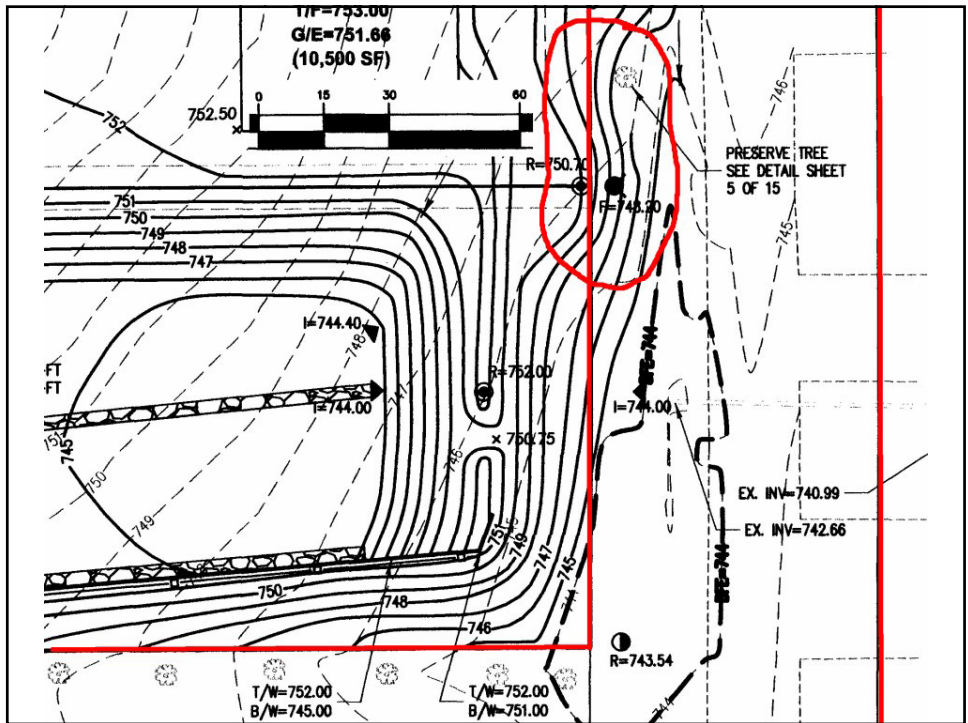
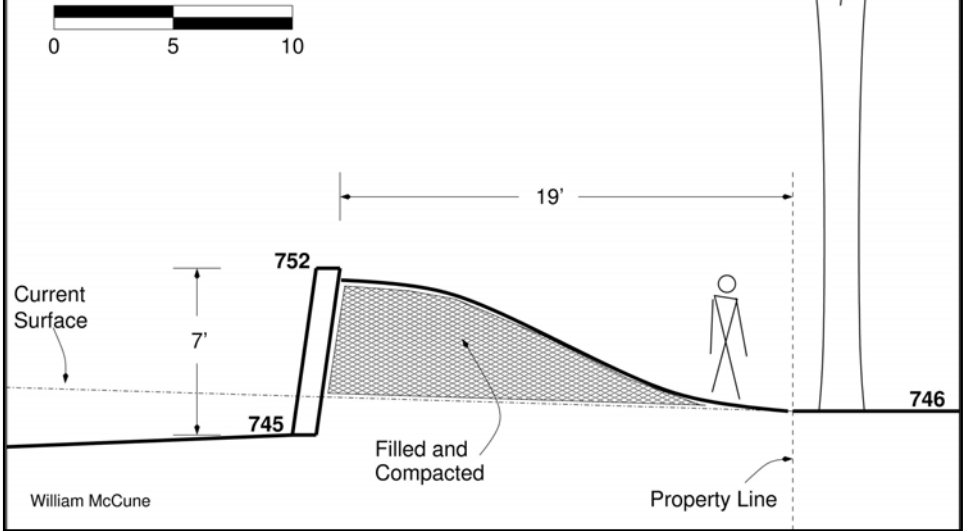
Looking EAST





### Suffocation of Tree Roots

East end of wall, looking east





## Downers Grove Tree Protection Requirements

Ordinances regarding trees, including tree protection requirements for public trees, are located in Chapter 24 of the Downers Grove Municipal Code. The Forestry Division of the Public Works Department implements and enforces these codes. The following identifies tree protection requirements for projects near public parkway trees.

Tree protection shall include avoiding damage to the above ground tree branches and trunk, and the below ground root system and surrounding soil. Roots are one of the most vital parts of a tree and must be protected from severing or changes in their soil environment caused by compaction and regrading. The majority of a tree's nutrient and water absorbing roots are in the upper 18 to 24 inches of soil. Damage to the roots can lead to irreversible tree decline or death in the coming years, unless the area around the tree trunk is protected during construction activities.

The Critical Root Zone, or CRZ, is the area immediately surrounding a tree that needs to be protected from damage. The size of this area, measured from the center of the tree, is generally a circle with a radius of one foot for each inch of trunk diameter. The depth of the CRZ extends to 4 feet below the natural ground surface level.

Village Forester in Public Works Memo, Sept. 2<sup>nd</sup>, 2005:

***4. South of the property line south of the detention area is a row of black walnuts which are in good condition. To ensure survival, all work must remain north of the property line and not trespass at anytime.***

Page 11 of 12  
C:\Documents and Settings\jobrien\Local Settings\Temporary Internet Files\OLK1\PW Review IV.doc

This is a very weak requirement.

## Recommendation

- We ask the Plan Commission to prohibit any construction activity within the standard Critical Root Zone.
- One foot of radius for each inch of trunk diameter.

To: April Holden

Date: May 17, 2005

Re: Request for public records from John Schofield

I have dealt with Andersen Homes about the damage and/or removal of 4 parkway trees at 3 locations. For the first 2 addresses, I sent letters and invoices and copies are attached. The 3rd address had the unauthorized removal of 2 parkway oak trees. At that address, I filed a complaint and calculated the tree values and copies are attached. An invoice was never printed for the 3<sup>rd</sup> address. However, Andersen settled before the case went to court. All 4 trees (total value \$15,382.60) were paid for on September 28, 2004.

